

# BROADSHEET WAIKATO BRANCH SEPT-OCT 2018



BRANCH CAPTAIN	SECRETARY	TREASURER
Ross Carroll 07 552 4585	Graham Jenner 07 357 4129	Ian Gerrard 07 549 2884

***From the Editor:** For those on email, you'll be receiving this newsletter by email from now on, unless you specifically request to receive a hard copy. I hope that this works for everyone.*

*By now you are probably getting used to the Christmas decorations popping up in shops and have thoughts of present shopping for family. Also remember that all your Sunbeam wants for Christmas is the occasional outing in the sunshine.*

*For those unable to make it to our December gathering at Okoroire on the 9<sup>th</sup> of December – I wish you all the best for Christmas.*

## NEXT EVENTS FOR YOUR CALENDAR

- **Sunday 9<sup>th</sup> December - (Waikato run)** – 2pm Waikato coffee catch up followed by the committee meeting at 3pm at Okoroire. Come along for catch up over a cuppa at the Okoroire Hotel. This is a great chance to get your Sunbeam (or yourself) out for a run or to see other Sunbeams. All welcome.

### **UPCOMING WAIKATO EVENTS (Ross Carroll 07 5524585; robro@kinect.co.nz)**

- **Sat 19 Jan – Branch AGM & picnic lunch at the Firth Tower, Matamata (tbc)**
- **Sun 20 Jan – VCC Car show – Lake front – Rotorua (see details below)**
- **Feb 22-24 – National AGM – Hamner**
- **May – Dawnbreaker – Tokoroa (date to be confirmed)**

### **UPCOMING AUCKLAND EVENTS (Kevin Brown 09 422 2128; brownkandg@xtra.co.nz)**

- 2018 Annual General Meeting of the Auckland and Northern Branch of the Sunbeam Car Club of New Zealand will take place on: **Sunday 2nd December 2017** at 10am at 24 Rosemount Road, Warkworth.
- **10 Feb** – Ellerslie Concours
- **3-6 May** – Northland tour

### **UPCOMING NATIONAL EVENTS**

- **February 22-24** – National AGM at Hamner Springs Retreat, Hamner (see p10 of September Sunbeamania for details, including a note on discounts for Ferry Crossings)

### **OTHER EVENTS:**

**Sunday 20 Jan 2019** - The Rotorua branch of the VCC are holding their 7th Annual Car Show at the Rotorua Lakefront Domain from 10am to 2pm. It is very informal, anyone can display, and there is a gold coin requested from drivers which will be donated to St John Ambulance. The event regularly raises over \$1000 for St Johns with donations from drivers and the public. In January this year over 300 cars were on

display! Clubs and groups will be able to display their cars together, and those arriving early (gates open 8.00am) will get the best positions under the trees.

This event is very laid back, with Rotorua's excellent "Eat Street" full of bistros, cafés and bars right next to the venue, and big shady trees to sit under for those wanting to picnic. The Soundshell markets and other holiday market activities will also be adjacent to the show. It could be an excellent run and day out for a club.

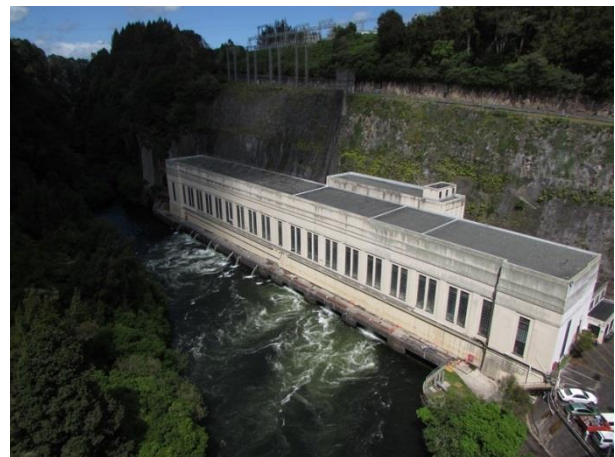
**Brits at the Beach 5-7 Feb 2019 Whangamata**

## **PAST EVENT**

### **26-28th October – STAR WEEKEND – IN & AROUND OHAKUNE**

There were plenty of fantastic driving roads, with spectacular views in this the CENTRAL NORTH ISLAND area. Nine cars, including two moderns turned up to enjoy the roads and by all accounts their occupants really enjoyed the travelling and the company. Geoff & Yvonne Lamberton and Peter & Barb Crawford from Manawatu Branch also joined us for the 3 day event. This event was planned by Merv & Kaye Thorburn and was linked to the hydro scheme that runs from the plateau to the dams along the Waikato. Kaye's cousin, who had worked on the scheme, had compiled an informative booklet about the dams and also provided interesting talks about the scheme as we travelled.

As per normal for the STAR weekend, this was a "self-directed" event with two or three cars travelling together and stopping where they wished. Andrew and I travelled with the Blomfield Rapier "Tweety" and the Marshall Fastback, so we spent plenty of time poking around at interesting spots on the first day. The first stop was a walk down to the swing bridge above the Arapuni Power Station. Reg, Margaret, Trevor and I posed for this photo on the swing bridge that sits high above the power station. In World War II, the building was painted in camouflage colours and covered with plants in an attempt to hide it from potential air strikes as it was a critical source of power for NZ.



Following the passage of water as it passed beyond the Arapuni, we travelled along the edges of the power scheme. The Waikato's first hydro-electric power station was the Horahora Power Station, now located under the Horahora bridge deep beneath the surface of Lake Karapiro. Horahora was built to supply electricity for the Martha gold mines at Waihi.

The river has a series of eight dams and nine hydro-electric power stations that generate electricity for the national grid. These were constructed between 1929 and 1971 to meet growing demand for electricity.

The power scheme begins at Lake Taupo, which has control gates to regulate the flow of water into the river. Once released through the gates it takes over 18 hours for the water to flow to the last power station at Karapiro.[25] On its journey downstream it passes through power stations at Aratiatia, Ohakuri, Atiamuri, Whakamaru, Maraetai, Waipapa, Arapuni and Karapiro.

These stations are all operated by Mercury Energy. Mercury operates 13 power stations, all in Auckland, Waikato, and the Bay of Plenty. In total, the company has 1638 MW of generating capacity - composed of 1078 MW hydroelectric, 385 MW geothermal, and 175 MW natural gas.

Name	Type	Location	Capacity (MW)	Annual Generation (average GWh)	Commissioned	Notes
<a href="#">Arapuni</a>	<a href="#">Hydroelectric</a>	<a href="#">Waikato River</a>	196.7	864	1946	
<a href="#">Aratiatia</a>	Hydroelectric	Waikato River	78	333	1964	
<a href="#">Atiamuri</a>	Hydroelectric	Waikato River	84	293	1962	
<a href="#">Karapiro</a>	Hydroelectric	Waikato River	96	506	1948	
<a href="#">Kawerau</a>	<a href="#">Geothermal</a>	<a href="#">Kawerau, Bay of Plenty</a>	100	831	2008	
<a href="#">Maraetai</a>	Hydroelectric	Waikato River	360	875	1954, 1971	
<a href="#">Mokai</a>	Geothermal	North-west of <a href="#">Taupo</a>	112	926	2000	Joint venture with Tuaropaki Trust
<a href="#">Nga Awa Purua</a>	Geothermal	North of <a href="#">Taupo</a>	140	1132	2010	Joint venture with Tauhara North No.2 Trust World's largest geothermal turbine (147 MW rated)
<a href="#">Ngatamariki</a>	Geothermal	North of <a href="#">Taupo</a>	82	687	2013	
<a href="#">Ohakuri</a>	Hydroelectric	Waikato River	112	402	1962	
<a href="#">Rotokawa</a>	Geothermal	North of <a href="#">Taupo</a>	33	270	1997	Joint venture with Tauhara North No.2 Trust
<a href="#">Waipapa</a>	Hydroelectric	Waikato	51	239	1961	

		River			
<a href="#">Whakamaru</a>	Hydroelectric	Waikato River	100	494	1956

([https://en.wikipedia.org/wiki/Mercury\\_Energy](https://en.wikipedia.org/wiki/Mercury_Energy))

The general aim was to get to Whanganui for lunch, with the first stop at the Tangiwahi memorial. From there the cars split up into smaller groups to head at their own space along Fields Track to Whanganui. Andrew and I travelled with Trevor Marshall and managed stops for bridge photos and a cuppa along the way. The hillsides along the roadside were draped with the yellow of flowering Kowhai trees.



As we neared Whanganui the rain predicted, reached us in the form of light drizzle. This lasted through lunch and clung to the edges of the Whanganui river as we travelled up the River Road to Jerusalem.

Jerusalem, Hiruhārama in Māori, is a tiny settlement 66 kilometres up the Whanganui River Road. It was originally called Patiarero and was one of the biggest settlements on the Whanganui River in the 1840's with several hundred Ngāti Hau inhabitants of the iwi Te Āti Haunui a Pāpārangi. Many Whanganui River settlements were given new place names by Reverend Richard Taylor in the 1850's.

Jerusalem Whanganui was an isolated site where, in 1892, Suzanne Aubert (known as Mother Mary Joseph) established the congregation of the Sisters of Compassion. They became a highly respected charitable nursing and religious order.

Also established was the Jerusalem Foundling Home in 1886 which housed and cared for abandoned children from around New Zealand. A convent remains in Jerusalem as well as the Church where the Sisters of Compassion still care for the buildings and the history of the site.

(<https://www.visitwhanganui.nz/jerusalem-whanganui/>)



The final day saw us heading through to Waiouru to the Military museum for morning tea before we separated to either head back to the Manawatu or to towards Taupo.

The day was clear enough for a line-up of cars in front of Mt Ruapehu. Thank you to the photographers who crossed the State Highway to capture good shots of the line-up.

The slow pace of the Whanganui river road was replaced with the speed of the “just going from here to there as fast as I can” drivers. Part way along the Desert Road, Andrew noticed a red ute that had popped in between the us and the Blomfields. It turns out that Andrew’s brother was heading through by chance and noticed the car and the “back of the head profiles”. We stopped for a catch-up on the side of the road and Reg captured the chance meeting in the photo below.



This was a weekend of travelling to interesting places and meeting with interesting people. Thank you to the organisers and the people who came along for making it another great STAR weekend.



Newsletter prepared by Kim McGrouther 17<sup>th</sup> of November, 2018

(ph 07 345 5956; wkd ph 07 533 1104)

**Postal address: 2 Parkcliff Rd, RD4, Rotorua 3074**

**E-mail: ruffry6600@gmail.com**

The Broadsheet is also on the Newsletter section of the club website at  
[www.sunbeamcarclubofnewzealand.org.nz](http://www.sunbeamcarclubofnewzealand.org.nz)